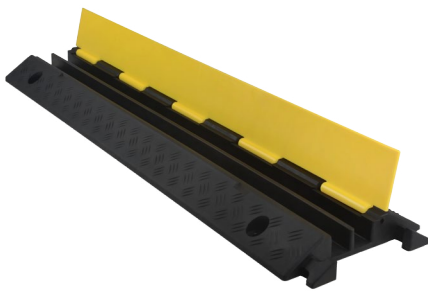




CABLE PROTECTORS



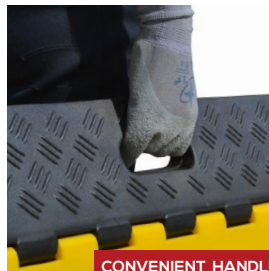
2 CHANNELS



3 CHANNELS



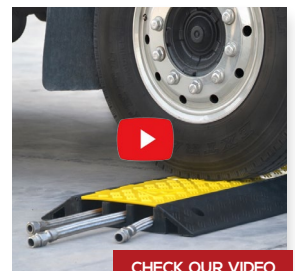
5 CHANNELS



CONVENIENT HANDLE



BUILT-IN CONNECTORS



CHECK OUR VIDEO

OUR RUBBER PRODUCTS HAVE BEEN TESTED BY TÜV RHEINLAND TO MEET REACH REGULATIONS = **NO STRONG SMELL!**



88 Yongchuan road,
266071 Qingdao, CHINA



contact@sinoconcept.com
www.sinoconcept.com

MOLDED IN WARNING SYMBOLS
Included on every yellow safety lid.

COMPANY NAME OR LOGO
Can be molded-in for easy identification.

INTERLOCKING SYSTEM
Increases strength, prevents disconnection and makes the installation easier.

SKIDPROOF SURFACE
Improve safety in all weather conditions.

CONVENIENT HANDLE
Easy to carry and to install.

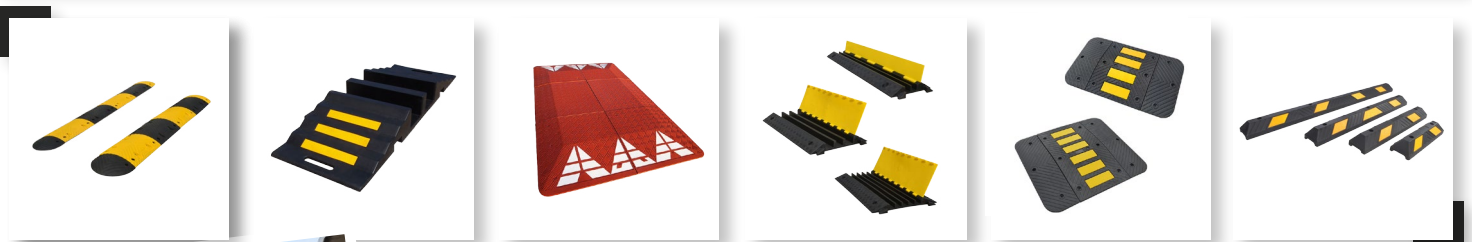
HEAVY DUTY HINGES
Ensure a better resistance and durability.

STRONG NYLON BAR
100% pure nylon for maximum resistance.

CE APPROVED
Match the European Union Standards and regulations (EN 50085-2-2:2008 CE certification).

PRODUCTS	CHANNELS	WEIGHT CAPACITY	MAXIMUM CABLE DIAMETER	DIMENSIONS
	2	5000 KG per axle (11 000 lbs)	30 mm (1")	Length: 980 mm / 39" Width: 240 mm / 9" Height: 45 mm / 2"
	3	9000 KG per axle (20 000 lbs)	50 mm (2")	Length: 900 mm / 36" Width: 500 mm / 20" Height: 70 mm / 3"
	5	9000 KG per axle (20 000 lbs)	35 mm (1.5")	Length: 900 mm / 36" Width: 500 mm / 20" Height: 50 mm / 2"

YOU MAY ALSO BE INTERESTED IN



We remain at your disposal if you need any further information.